



# PYRAMIDS OF LIFE



## A WEEK IN SERENGETI SOUTH

Head down to the furthest tip of the Serengeti and emerge amidst the wildebeest calving season.

## A WEEK IN SERENGETI MOBILE KUSINI

In the lush green Mara North Conservancy, observe the transition of rainfall to sustenance..

## A WEEK ADVENTURE FLY CAMPING

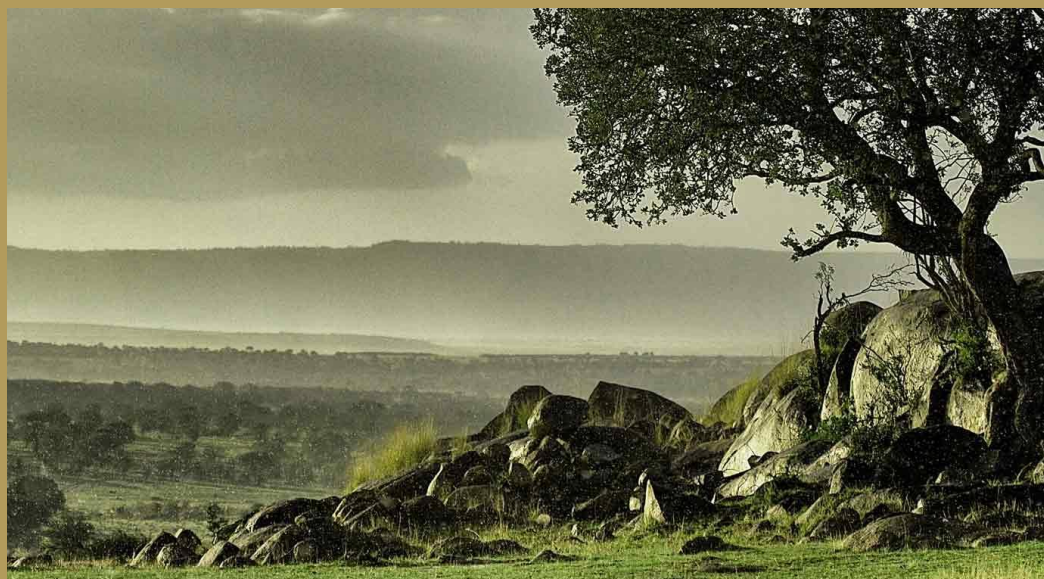
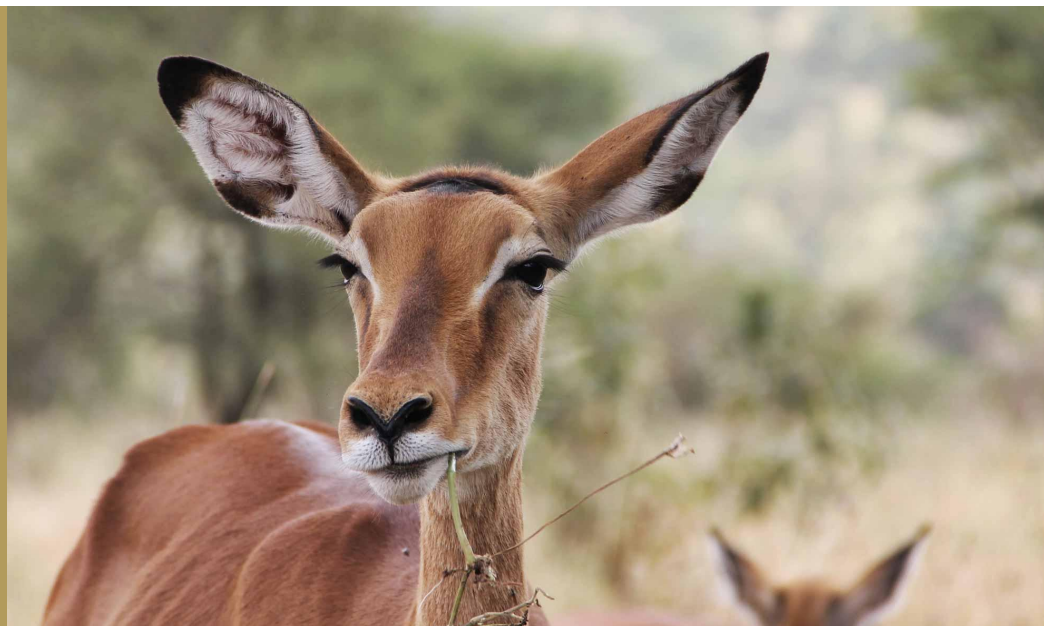
Your senses thrum to life, widening your perceptive capacities to their fullest function..

Join the Alex Walker's Serian team in April 2018 as we embark on another edition of Pyramids of Life. Every year our award winning guiding team brushes up on their skills under the expert guidance of safari gurus Chris Stamper and Clint Schipper. The itinerary starts with 10 days in the Mara North Conservancy followed by 10 days in Southern Serengeti.

Our guiding is a cornerstone of the Serian experience, and the key to what we're all about. Be part of how we get our guides to the high standards we uphold, and gain an insight into the wealth of knowledge that comes with the territory.

The beauty of our team is that it melds two complementary systems of knowledge: centuries-old bushlore, inherited with myth, intuition, and a lifetime of absorbing the wilds by osmosis – and scientific learning, which peels back the magical processes to examine them under the cool gaze of a microscope. The combination of the two yields an immeasurable wealth of insight into these magical spaces.

Imagine a week's immersion in each environment, allowing you to explore, document, draw, paint, photograph, and learn with our awesome crew... And if you're unable to get away for all 20 days, pick the dates that suits you best (minimum 5 night stay)!



ALEX WALKER'S SERIAN

safaris@serian.com | [www.serian.com](http://www.serian.com)

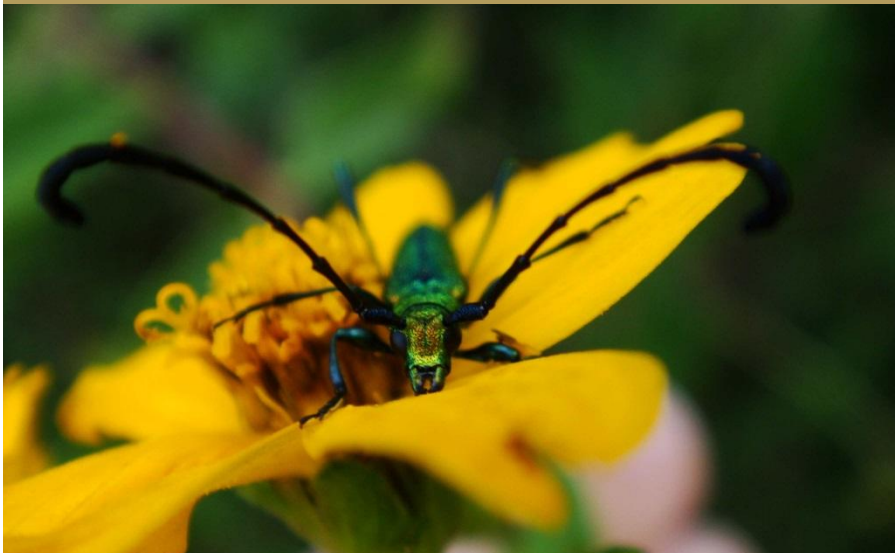


## SERIAN'S SERENGETI SOUTH

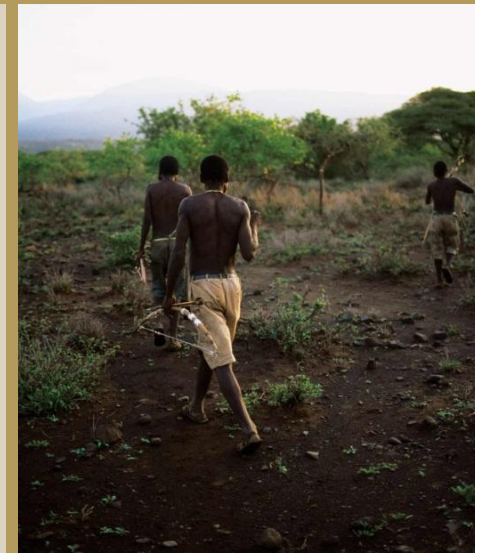
Head down to the furthest tip of the Serengeti and emerge amidst the wildebeest calving season: 2 million gnus giving birth to 3-400,000 young, and all the predator action that attends. With all the birds dazzling in their breeding plumage, this is the perfect spot for ornithology. The geography as the plains give way to the Rift Valley and Lake Eyasi is endlessly beautiful as well as fascinating, and this is a stunning spot to explore the macro elements on walking safaris. Here, the resident Hadzabe hunter-gatherers will unveil their symbiotic relationship with their environment and impart their ancient wisdom.



### A WEEK IN SOUTHERN SERENGETI



*"What a happy country  
– even the elephants  
are smiling. The  
openness and the open  
atmosphere of the  
camp makes this place  
unforgettable"*  
Trond Pyle



ALEX WALKER'S SERIAN

safaris@serian.com | [www.serian.com](http://www.serian.com)





## SERIAN'S MOBILE KUSINI

This part of the world is remarkable for its sheer mind-boggling immensity: think unending savannah, massive vaulted skies – and 2 million wildebeest giving birth to 400,000 calves within a period of 3 to 4 weeks. Ultimately, it's vastness and numbers on a scale that stretches the boundaries of the mind.

---

### A WEEK AT SERIAN'S MOBILE KUSINI



ALEX WALKER'S SERIAN

safaris@serian.com | [www.serian.com](http://www.serian.com)



## ADVENTURE FLY CAMPING

In the company of Specialist Walking Guides Alex and Chris you are in the best possible hands to have this magical terrain and all its hidden meanings unveiled to you.

The key is in the gradual nature of your exploration: a progressive immersion where time is marked not by a ticking watch but by the sun's lazy arc across the sky takes you to a more immediate connection with your surrounds. Your senses thrum to life, widening your perceptive capacities to their fullest function, accentuated by the deep peace and silence of wide open spaces.

---

### A WEEK ADVENTURE FLY CAMPING



ALEX WALKER'S SERIAN

safaris@serian.com | [www.serian.com](http://www.serian.com)



A close-up photograph of a green lizard with yellow spots climbing a tree trunk. The lizard is positioned diagonally across the frame, with its head at the top left and its body extending towards the bottom right. The tree trunk is made of weathered, greyish-brown wood with visible grain and texture. The background is a soft, out-of-focus mix of brown and green tones, suggesting a natural, wooded environment.

# ALEX WALKER'S SERIAN

*"We have no idea what heaven looks like but this must be the closest to it. Thank you very much for an unforgettable 8 days. The only thing left to do is to work out when to come back!" Nadia & Zafi*

ALEX WALKER'S SERIAN

safaris@serian.com | [www.serian.com](http://www.serian.com)